

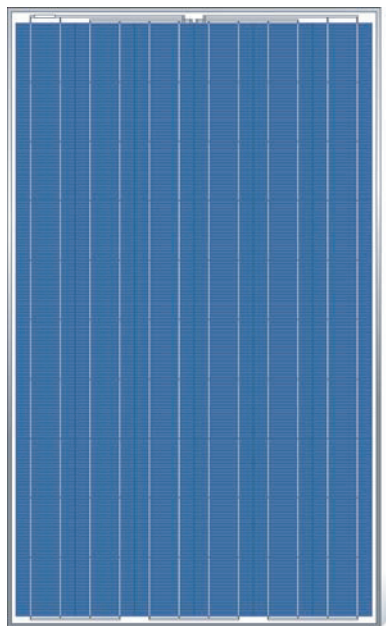
VSP6

210/215/220/225
230/235/240



VacSol

SOLAR PHOTOVOLTAIC MODULE



PRODUCT OVERVIEW

- VacSol PV modules are optimally manufactured and adjusted to meet the needs of the current market; Module designed for easy installation.
- The continuous efforts in quality assurance system and certifications, the international authentication institutions of VacSol' s products demonstrate our commitment to product quality and customer requirements

MODULE CHARACTERISTICS

- Assembled by high efficiency crystalline silicon cells
- Two types: mono-crystalline and multi-crystalline
- Power range of standard module: 155W-240W (power output depends on efficiency and type of cells used)
- With or without screw frame design, strong mechanical resistance
- High transmission low iron tempered glass strong mechanical resistance
- Standard waterproof junction box, with bypass diode, which protects the module from burning caused by hot-spot effect because of shading
- High endurance to different atrocious weather, passed the IEC 61215 & IEC61730 performance test and UL1703 safety test
- 5-year quality guarantee and 10 - 25-year power output guarantee

ELECTRICAL PARAMETER

TYPE	VSP6-210	VSP6-215	VSP6-220	VSP6-225	VSP6-230	VSP6-235	VSP6-240
Rated Maximum Power at STC	210W	215W	220W	225W	230W	235W	240W
Open Circuit Voltage (Voc)	36.60	36.77	36.94	37.11	37.28	37.45	37.62
Maximum Power Voltage (Vmp)	29.40	29.60	29.80	30.00	30.20	30.40	30.60
Maximum Power Current (Imp)	7.14	7.26	7.38	7.50	7.62	7.73	7.84
Short Circuit Current (Isc)	8.10	8.16	8.25	8.33	8.42	8.50	8.59
Power Tolerance	±3%						
αPm	-0.47%/°C						
γVoc	-0.33%/°C						
ΔIsc	+0.036%/°C						



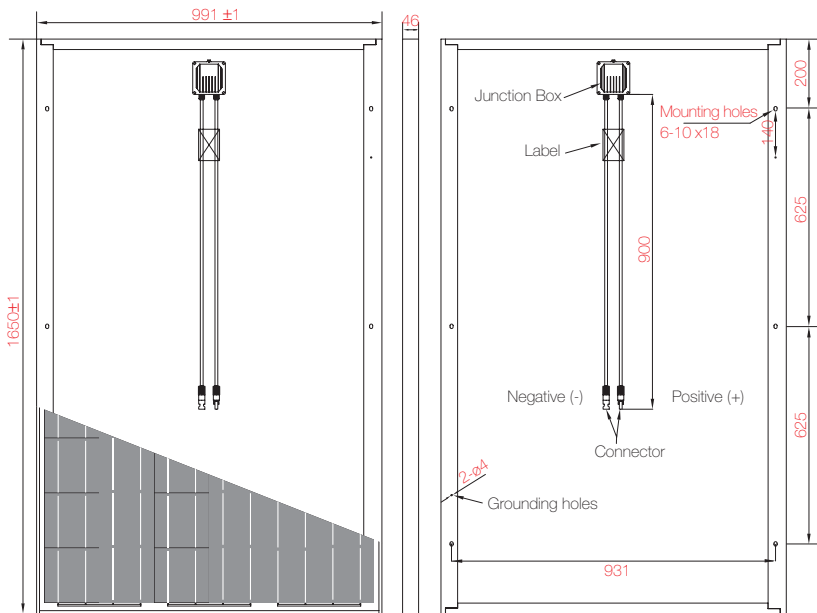
VSP6

210/215/220/225
230/235/240



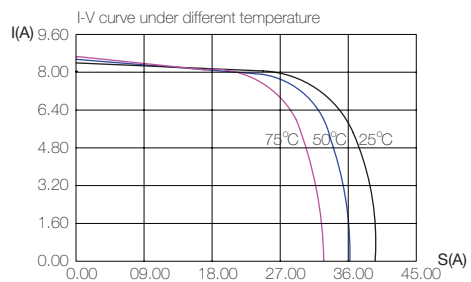
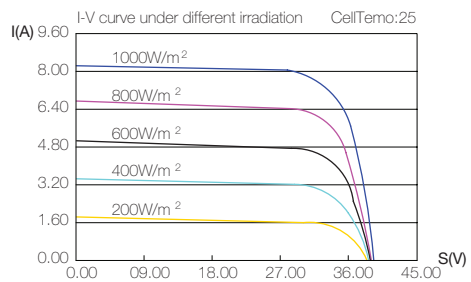
VacSol

SOLAR PHOTOVOLTAIC MODULE



I-V CURVE

Output under different irradiation and the correlation between $I_{sc}/V_{oc}/P_{max}$ and Temperature map



MECHANICAL PARAMETERS

Cell (mm)	Poly 156x156
Weight (kg)	19.5
Dimensions (LxWxH) (mm)	1650x991x46
Cable Length (mm)	900
Cable cross section size mm ²	4
No. of cells and connections	60 (10x6)
No. of diodes	3
Packing configuration	22pcs/carton

WORKING CONDITIONS

Maximum System Voltage	DC 1000V
Operating Temp.	-40°C~+85°C
Maximum Series Fuse (A)	15
Static loading	5400Pa
Grounding conductivity	<0.1
NOCT	47±2°C
Safety Class	Class C
Insulation Resistance	100M

GUARANTEE

5-year limited product quality warranty

Limited power warranty: 10 years at 90% of the minimal rated power output, 25 years at 80% of the minimal rated power output



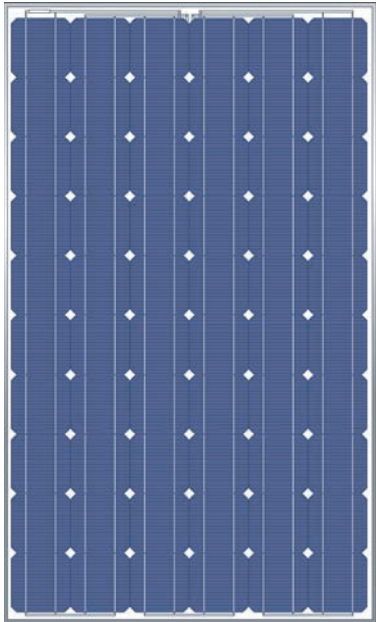
VSM6

210/215/220/225
230/235/240



VacSol

SOLAR PHOTOVOLTAIC MODULE



PRODUCT OVERVIEW

- VacSol PV modules are optimally manufactured and adjusted to meet the needs of the current market; Module designed for easy installation.
- The continuous efforts in quality assurance system and certifications, the international authentication institutions of VacSol' s products demonstrate our commitment to product quality and customer requirements

MODULE CHARACTERISTICS

- Assembled by high efficiency crystalline silicon cells
- Two types: mono-crystalline and multi-crystalline
- Power range of standard module: 155W-240W (power output depends on efficiency and type of cells used)
- With or without screw frame design, strong mechanical resistance
- High transmission low iron tempered glass strong mechanical resistance
- Standard waterproof junction box, with bypass diode, which protects the module from burning caused by hot-spot effect because of shading
- High endurance to different atrocious weather, passed the IEC 61215 & IEC61730 performance test and UL1703 safety test
- 5-year quality guarantee and 10 - 25-year power output guarantee

ELECTRICAL PARAMETER

TYPE	VSM6-210	VSM6-215	VSM6-220	VSM6-225	VSM6-230	VSM6-235	VSM6-240
Rated Maximum Power at STC	210W	215W	220W	225W	230W	235W	240W
Open Circuit Voltage (Voc)	36.60	36.77	36.94	37.11	37.28	37.45	37.62
Maximum Power Voltage (Vmp)	29.40	29.60	29.80	30.00	30.20	30.40	30.60
Maximum Power Current (Imp)	7.14	7.26	7.38	7.50	7.62	7.73	7.84
Short Circuit Current (Isc)	8.10	8.16	8.25	8.33	8.42	8.50	8.59
Power Tolerance	±3%						
αPm	-0.47%/°C						
γVoc	-0.33%/°C						
δIsc	+0.036%/°C						



VSM6

210/215/220/225
230/235/240

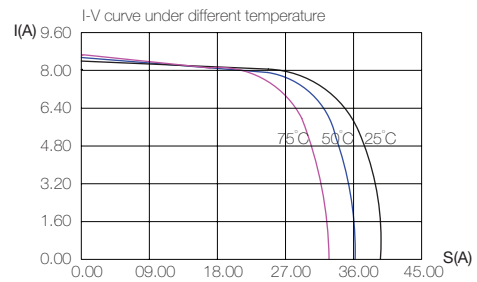
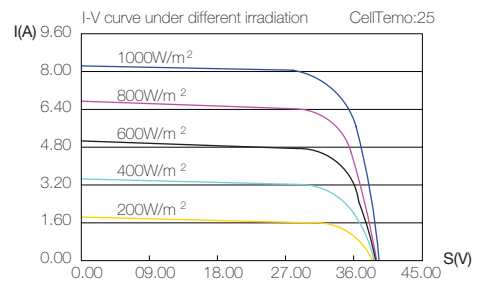
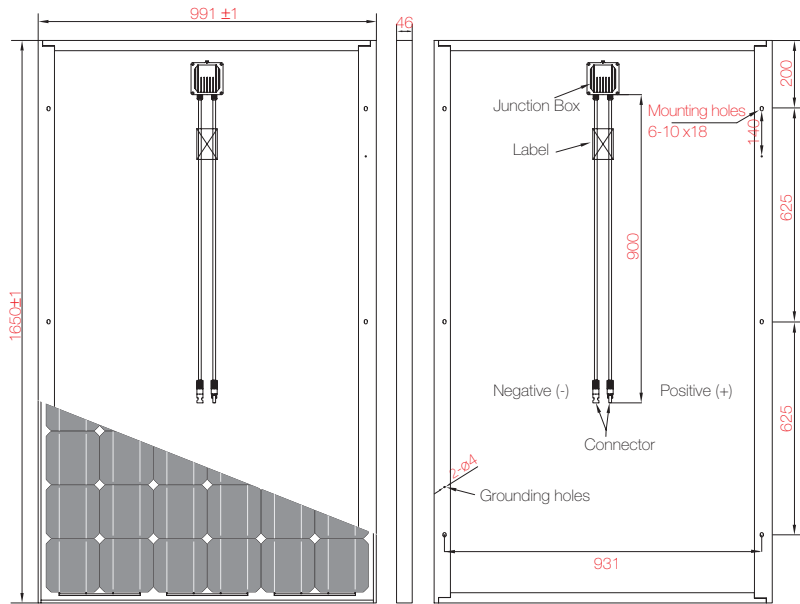


VacSol

SOLAR PHOTOVOLTAIC MODULE

I-V CURVE

Output under different irradiation and the correlation between $I_{sc}/V_{oc}/P_{max}$ and Temperature map



MECHANICAL PARAMETERS

Cell (mm)	Mono 156x156
Weight (kg)	19.5
Dimensions (LxWxH) (mm)	1650x991x46
Cable Length (mm)	900
Cable cross section size mm ²	4
No. of cells and connections	60 (10x6)
No. of diodes	3
Packing configuration	22pcs/carton

WORKING CONDITIONS

Maximum System Voltage	DC 1000V
Operating Temp.	-40°C~+85°C
Maximum Series Fuse (A)	15
Static loading	5400Pa
Grounding conductivity	<0.1
NOCT	47±2°C
Safety Class	Class C
Insulation Resistance	100M

GUARANTEE

5-year limited product quality warranty

Limited power warranty: 10 years at 90% of the minimal rated power output, 25 years at 80% of the minimal rated power output



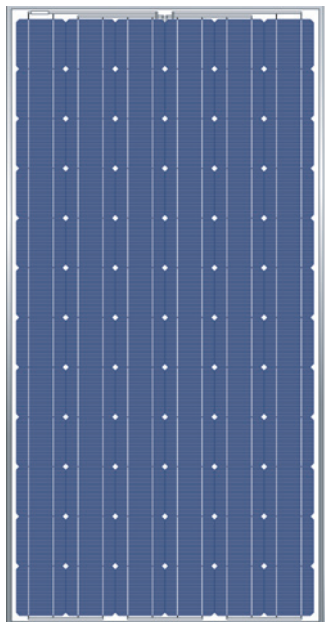
VSM5(L)

165/170/175/180/185/190



VacSol

SOLAR PHOTOVOLTAIC MODULE



PRODUCT OVERVIEW

- VacSol PV modules are optimally manufactured and adjusted to meet the needs of the current market; Module designed for easy installation.
- The continuous efforts in quality assurance system and certifications, the international authentication institutions of VacSol' s products demonstrate our commitment to product quality and customer requirements

MODULE CHARACTERISTICS

- Assembled by high efficiency crystalline silicon cells
- Two types: mono-crystalline and multi-crystalline
- Power range of standard module: 155W-240W
(power output depends on efficiency and type of cells used)
- With or without screw frame design, strong mechanical resistance
- High transmission low iron tempered glass strong mechanical resistance
- Standard waterproof junction box, with bypass diode, which protects the module from burning caused by hot-spot effect because of shading
- High endurance to different atrocious weather, passed the IEC 61215 & IEC61730 performance test and UL1703 safety test
- 5-year quality guarantee and 10 - 25-year power output guarantee

ELECTRICAL PARAMETER

TYPE	VSM5(L)-165	VSM5(L)-170	VSM5(L)-175	VSM5(L)-180	VSM5(L)-185	VSM5(L)-190
Rated Maximum Power at STC	165W	170W	175W	180W	185W	190W
Open Circuit Voltage (Voc)	44.0	44.2	44.4	44.6	44.8	45.0
Maximum Power Voltage (Vmp)	35.6	36.0	36.3	36.5	36.7	36.8
Maximum Power Current (Imp)	4.64	4.72	4.82	4.93	5.04	5.16
Short Circuit Current (Isc)	5.10	5.20	5.30	5.40	5.48	5.56
Power Tolerance	±3%					
αP_m	-0.47%/°C					
νV_{oc}	-0.33%/°C					
δI_{sc}	+0.036%/°C					



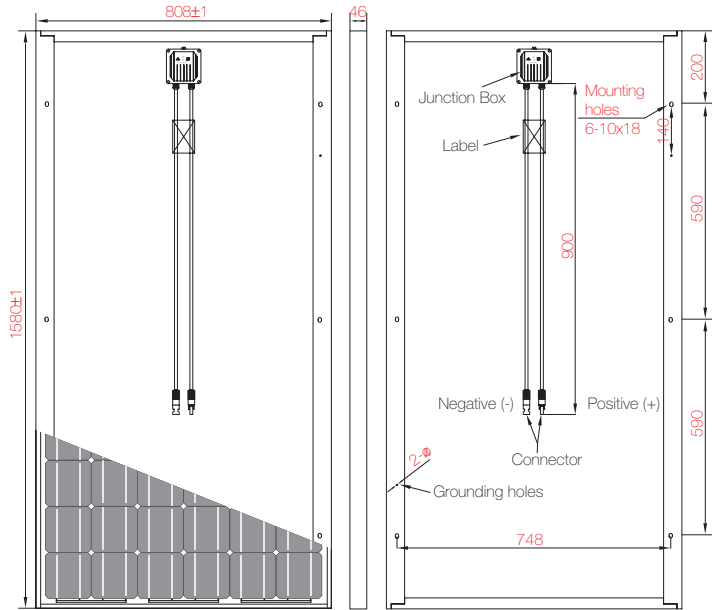
VSM5(L)

165/170/175/180/185/190



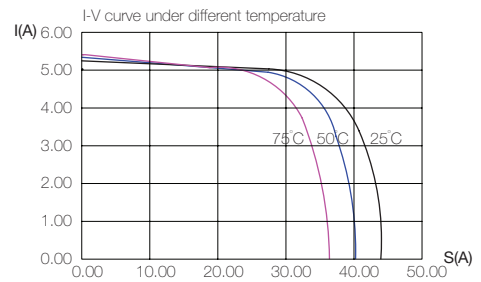
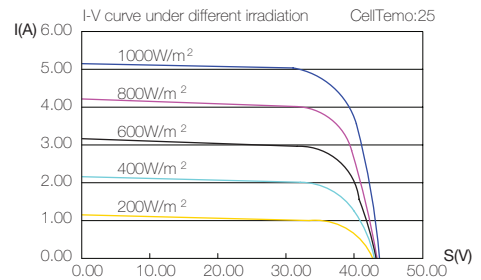
VacSol

SOLAR PHOTOVOLTAIC MODULE



I-V CURVE

Output under different irradiation and the correlation between Isc/Voc/ Pmax and Temperature map



MECHANICAL PARAMETERS

Cell (mm)	Mono 125x125 SL
Weight (kg)	15.5
Dimensions (LxWxH) (mm)	1580x808x46
Cable Length (mm)	900
Cable cross section size mm ²	4
No. of cells and connections	72 (12x6)
No. of diodes	3
Packing configuration	22pcs/carton

WORKING CONDITIONS

Maximum System Voltage	DC 1000V
Operating Temp.	-40°C~+85°C
Maximum Series Fuse (A)	10
Static loading	5400Pa
Grounding conductivity	<0.1
NOCT	47±2°C
Safety Class	Class C
Insulation Resistance	100M

GUARANTEE

5-year limited product quality warranty

Limited power warranty: 10 years at 90% of the minimal rated power output, 25 years at 80% of the minimal rated power output

